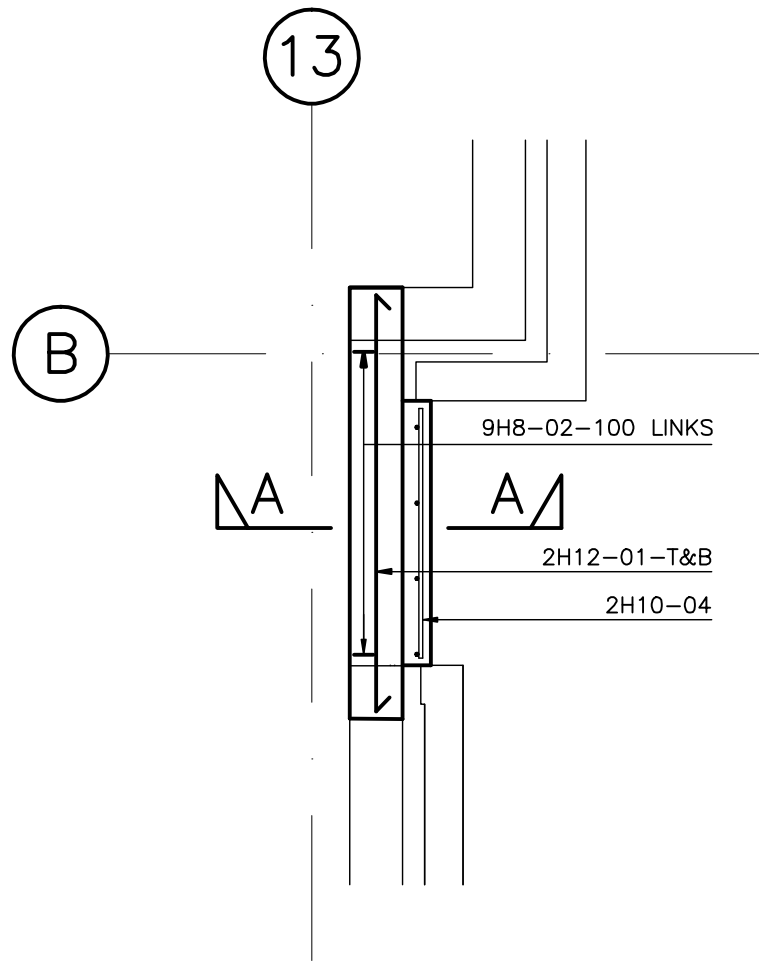


SECTION A-A.  
1:10.



PLAN.  
1:20.

- 1 ALL MATERIALS AND WORKMANSHIP TO COMPLY WITH SEJC CONSULTING ENGINEERS STANDARD SPECIFICATION FOR REINFORCED CONCRETE AND ALL RELEVANT BRITISH STANDARDS.
- 2 THIS DRAWING TO BE READ IN CONJUNCTION WITH ALL RELEVANT ARCHITECTS AND SEJC CONSULTING ENGINEERS DRAWINGS.
- 3 FOR DETAILS OF CONCRETE MIX REFER TO SEJC STANDARD CONCRETE SPECIFICATION.
- 4 ALL CONCRETE TO BE VIBRATED IN ACCORDANCE WITH SEJC CONSULTING ENGINEERS STANDARD SPECIFICATION FOR REINFORCED CONCRETE.
- 5 REINFORCEMENT SHOWN IS SCHEDULED ON BAR LIST(S) 501180C-20-315-01.  
  
MINIMUM CONCRETE COVER TO REINFORCEMENT 20mm, UNLESS NOTED OTHERWISE.
- 6 ABBREVIATIONS:  
  
T(12) DENOTES HIGH YIELD TYPE 2 BARS.  
R DENOTES MILD STEEL ROUND BARS.  
AB ALTERNATE BARS.  
ABR ALTERNATE BARS REVERSED.  
ABS ALTERNATE BARS STAGGERED.  
NF NEAR FACE.  
FF FAR FACE.  
EF EACH FACE.  
T TOP FACE.  
B BOTTOM FACE.
- 7 ALL REINFORCEMENT TO BE HIGH YIELD TYPE B500A, B500B OR B500C RIBBED BARS TO BS4449:2005.
- 8 BENDING AND SCHEDULING OF REINFORCEMENT TO BE IN ACCORDANCE WITH BS 8666:2005.

STATUS:-			
AS BUILT			
DRAWN BY_	CM WAGSTAFF_	DATE_	10.10.07_
CHECKED BY_	-----	DATE_	-----
PROJECT ENGINEER_	-----	DATE_	-----

CLIENT.
CTP S JAMES
ARCHITECT. FaulknerBrowns
CONTRACT WAKEFIELD WATERFRONT, PHASE 1, BUILDING 20



**SEJC Consulting Engineers**  
Consulting Structural & Civil Engineers

Sanderson House, Station Road, Horsforth, Leeds LS18 5NT  
Telephone 0113 2590090 Fax 0113 2588640

DRAWING TITLE			
LINTEL RC DETAILS E1517 E2017 E3017 E4014			
SCALES 1:20 1:10			
CONTRACT No	DRG No		
501180C	20-315		